

To Let

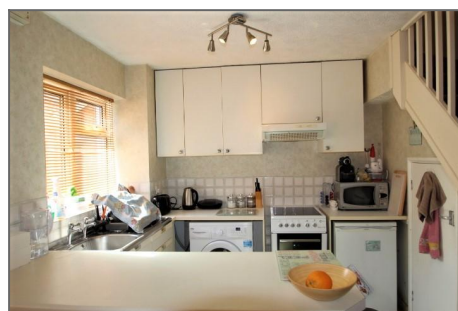
Copper Beech Close, Orpington BR5 4AT



**£850 PER MONTH**

**1 BEDROOM TERRACED**

- ✓ RESERVED SUBJECT TO REFERENCING
- ✓ ONE BEDROOM TERRACED HOUSE
- ✓ SITUATED IN A SMALL CLOSE
- ✓ FITTED KITCHEN
- ✓ PRIVATE GARDEN TO FRONT
- ✓ OFF STREET PARKING TO FRONT
- ✓ WALKING DISTANCE OF THE NUGENT
- ✓ CLOSE TO ST MARY CRAY STATION



## Description

LET SUBJECT TO REFERENCING - This one bedroom terraced house situated in St Mary Cray. The house is offered un-furnished with white goods and comprises of: reception room open to kitchen area, bathroom, bedroom, off street parking to front, garden to front. Please call Bishop Estates to arrange a viewing on 01689 873796.



## Ground Floor

**RECEPTION ROOM** - Via upvc front door, double glazed window to front, radiator, storage heater.

**KITCHEN** - 7' 8" x 6' 0" (2.37m x 1.83m) Kitchen with a range of wall and base units with work tops over, washing machine, fridge, freezer, cooker, extractor hood, double glazed window to front, stainless steel sink unit with drainer, under stairs storage cupboard.



## First Floor

**BATHROOM** - Panelled bath with shower attachment, low level wc, frosted double glazed window to front, pedestal wash hand basin, part tiled walls.

**BEDROOM** - 11' 5" x 8' 10" (3.48m x 2.71m) Double glazed window to front, fitted wardrobes, carpet, electric heater.

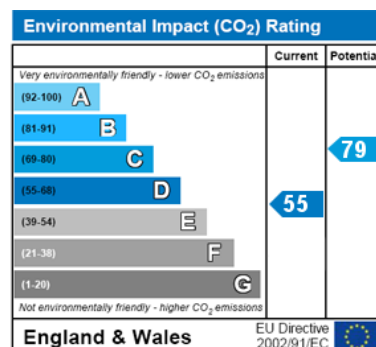
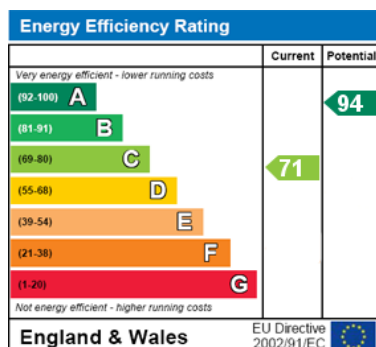


## Exterior

**OFF STREET PARKING** - Parking to front.

**GARDEN** - Garden to the front of the property

## Energy Efficiency and Environmental Impact



## Additional Information

5 week deposit £980.76

**Disclaimer:** These particulars are thought to be materially correct though their accuracy is not guaranteed and they do not form part of any contract. All measurements are approximate and we have not tested any fitted appliances, electrical or plumbing installation or central heating systems.