

For Sale

Clareville Road, Orpington, Kent BR5 1RU



£280,000 LEASEHOLD

2 BEDROOM FLAT

- ✓ GROUND FLOOR MAISONETTE
- ✓ 2 DOUBLE BEDROOMS
- ✓ FITTED KITCHEN/BREAKFAST ROOM
- ✓ DOUBLE GLAZING
- ✓ SOUGHT AFTER LOCATION
- ✓ CONVENIENT FOR STATION & HIGH STREET
- ✓ COMMUNAL GARDENS
- ✓ CHAIN FREE



Description

Bishop Estates are pleased to offer this ground floor spacious maisonette situated on the ever popular area of Crofton. The property is ideally located for Orpington Station, the Town Centre and the highly regarded Crofton Primary and Darrick Wood Schools. It comprises of 2 double bedrooms, fitted kitchen diner, spacious lounge, white bathroom suite and communal gardens. Call owners sole agents on 01689 873796 to make an appointment to view.

Ground Floor

ENTRANCE HALL - Double glazed door to front, matting.

LOUNGE - 12' 2" x 10' 9" (3.73m x 3.3m) Double glazed window to front, underfloor heating, carpet.

KITCHEN/BREAKFAST ROOM - 14' 2" x 10' 7" (4.33m x 3.25m) 2 Double glazed windows to rear, single drainer sink unit set in a range of matching white wall and base units with work surfaces, built in oven and hob, extractor hood, built in washing machine and dishwasher, laminate floor.

BEDROOM 1 - 12' 2" x 10' 6" (3.73m x 3.22m) Double glazed window, carpet.

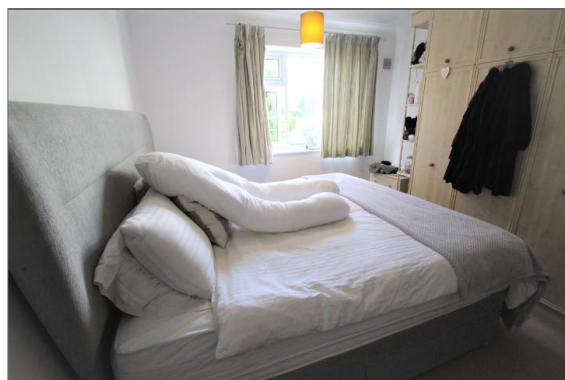
BEDROOM 2 - 10' 6" x 10' 6" (3.22m x 3.22m) Double glazed window to rear, carpet.

BATHROOM - Double glazed frosted window to rear, panelled bath with shower attachment, pedestal wash hand basin, lino flooring, towel rail.

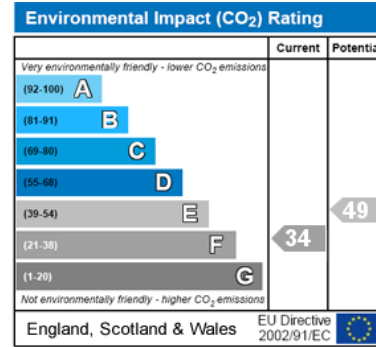
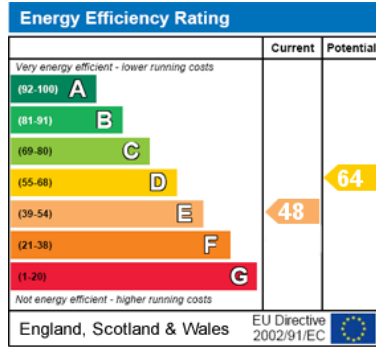
Exterior

GARDEN - communal lawns with flowerbeds.

PARKING - Garage en bloc, up and over door.



Energy Efficiency and Environmental Impact



Disclaimer: These particulars are thought to be materially correct though their accuracy is not guaranteed and they do not form part of any contract. All measurements are approximate and we have not tested any fitted appliances, electrical or plumbing installation or central heating systems.