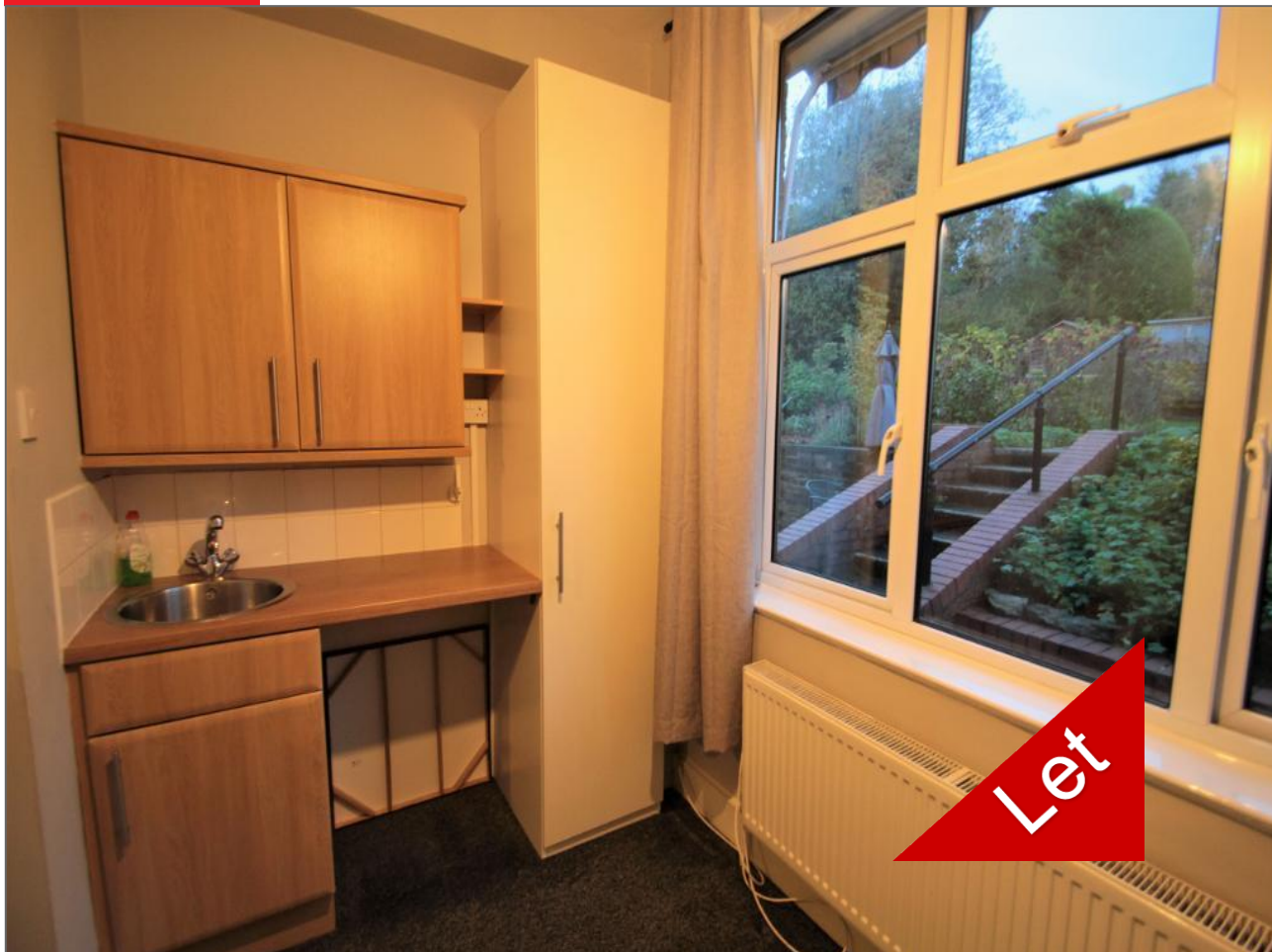


To Let

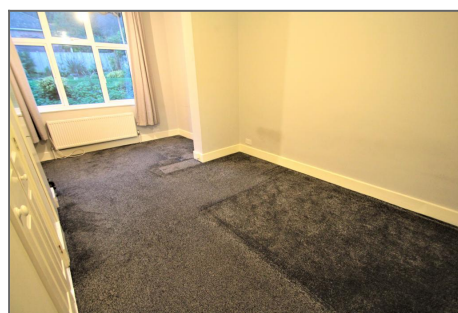
Tower Road, Orpington BR6 0SQ



£725 PER MONTH

1 BEDROOM STUDIO

- ✓ ALL BILLS INCLUDED
- ✓ SPACIOUS EXECUTIVE ROOM
- ✓ SHARE OF KITCHEN
- ✓ OWN WC
- ✓ USE OF REAR GARDEN
- ✓ DOUBLE GLAZING AND GAS CENTRAL HEATING
- ✓ CLOSE TO STATION AND HIGH STREET
- ✓ AVAILABLE NOW



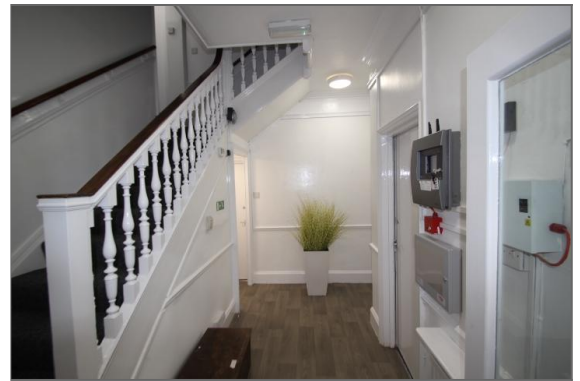
Description

ALL BILLS INCLUDED.

Spacious executive room with share of bathroom and kitchen facilities and own w/c. Ideally suited for professional tenants, especially commuters to London, as Tower Road Is within just a short walk of High Street and Orpington BR Station. Minimum rental period is 6 months. Available immediately.

Ground Floor

ENTRANCEH PORCH - Via double doors.



Energy Efficiency and Environmental Impact

| Energy Efficiency Rating | | | |
|--------------------------|---------------|---------|-----------|
| Score | Energy rating | Current | Potential |
| 92+ | A | | 94 A |
| 81-91 | B | | |
| 69-80 | C | | |
| 55-68 | D | 66 D | |
| 39-54 | E | | |
| 21-38 | F | | |
| 1-20 | G | | |

Disclaimer: These particulars are thought to be materially correct though their accuracy is not guaranteed and they do not form part of any contract. All measurements are approximate and we have not tested any fitted appliances, electrical or plumbing installation or central heating systems.