

For Sale

Fort Road, Halstead TN14 7BW



**£485,000 FREEHOLD**

**3 BEDROOM SEMI-DETACHED**

- ✓ COMPLETELY REFURBISHED FAMILY HOME
- ✓ HIGH SPECIFICATION
- ✓ THREE BEDROOMS
- ✓ LUXURY BATHROOM WITH TV
- ✓ LUXURY FITTED KITCHEN
- ✓ UTILITY ROOM AND CLOAKROOM
- ✓ LOUNGE AND DINING ROOM
- ✓ OFF STREET PARKING FOR SIX CARS



## Description

Bishop Estates are pleased to offer for sale this immaculate three bedroom semi detached family home in the popular Halstead area. The property has undergone a programme of refurbishment over the last four years and comprises of: family reception room, dining room with double doors to rear garden, luxury fitted kitchen, lobby with storage areas, ground floor cloakroom, utility room, three bedrooms, luxury bathroom with tv to the first floor, off street parking to front via double gates providing parking for six + cars, rear garden with decked area and lighting surrounding, outside security lighting, side access, further large patio to side, patio area to rear. To fully appreciate what this beautiful home has to offer, please contact us on 01689 873 796 to arrange a viewing.



## Ground Floor

**ENTRANCE HALL** - Via covered entrance porch, upvc front door, alarm controls, CCTV, laminate floor covering, spotlights, understairs shoe cupboard, further cupboard and hanging cupboard.

**RECEPTION ROOM** - 14' 2" x 10' 3" (4.33m x 3.14m) Laminate floor covering, double glazed windows to front, Coal effect feature fireplace, radiator, wooden mantle, glass enclosed door.

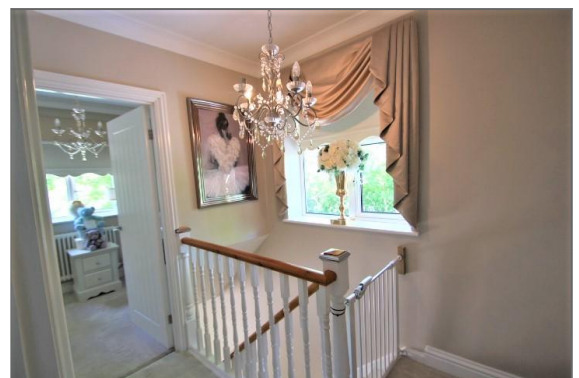
**DINING ROOM** - 10' 7" x 10' 3" (3.23m x 3.13m) Laminate flooring, storage cupboard with shelving, radiator, double glazed windows to rear and double glazed french style doors to rear.

**FITTED KITCHEN** - 10' 7" x 10' 7" (3.24m x 3.24m) With matching wall and base units with Granite work tops over, under unit lighting, plinth lighting, part tiled walls, tiled flooring with underfloor heating, integrated fridge/freezer, integrated full size dishwasher, range oven with extractor hood over, spotlighting, Butler style sink with mixer tap, double glazed windows to rear, door with glass insert. Through to:-

**LOBBY AREA** - With cupboard housing boiler, double glazed window to rear. Cupboard housing meters. Further storage cupboard. UPVC door leading to the side.

**GROUND FLOOR CLOAKROOM** - High flush wc, tiled floor, fully tiled walls, double glazed window to side.

**UTILITY ROOM** - 9' 6" x 5' 3" (2.91m x 1.63m) Double glazed window to front, space for tumble dryer, space and plumbing for washing machine, Butler sink with mixer tap, central light fitting, tiled floor with underfloor heating, storage cupboards.



## First Floor

**LANDING** - Double glazed window to side, carpet.

**BEDROOM ONE - 11' 0" x 10' 4" (3.38m x 3.15m)** Radiator, double glazed window to front, carpet, various built in wardrobe cupboards with hanging and shelving, wall mounted lights, carpet, loft access.

**BEDROOM TWO - 12' 2" x 9' 0" (3.71m x 2.75m)** Double glazed window to rear, radiator, laminate flooring, cupboard housing hot water tank.

**BEDROOM THREE - 7' 6" x 7' 4" (2.31m x 2.25m)** Carpet, radiator, double glazed window to front, wardrobe cupboards with hanging and storage, carpet.

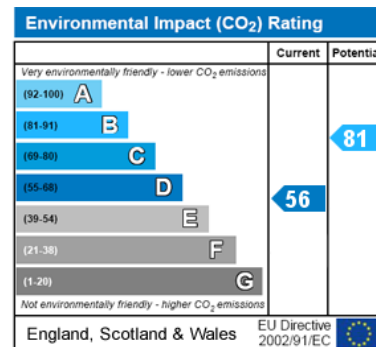
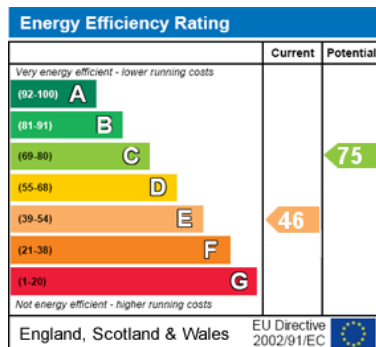
**BATHROOM SUITE - 7' 10" x 5' 0" (2.39m x 1.55m)** Victorian style claw foot bathwith mixer tap and shower attachment, radiator with heater towel rail, wash hand basin, low level wc, frosted double glazed window to side, fully tiled, spot lights, wall mounted TV.

## Exterior

**FRONT GARDEN** - Via double gates, shingled driveway providing off street parking for six + cars, flower and shrub borders with exterior lighting, side access to garden.

**REAR GARDEN** - Side access, flower borders with lighting, decking with lighting, rear patio, Synthetic lawn, large oil tank, additional patio to side.

## Energy Efficiency and Environmental Impact



**Disclaimer:** These particulars are thought to be materially correct though their accuracy is not guaranteed and they do not form part of any contract. All measurements are approximate and we have not tested any fitted appliances, electrical or plumbing installation or central heating systems.