

To Let

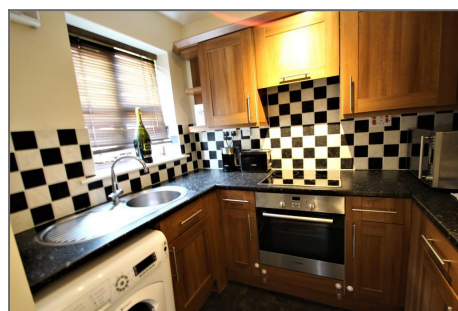
Dunster Court, Hardwick Crescent, Dartford DA2 6SD



£975 PER MONTH

2 BEDROOM FLAT

- ✓ FIRST FLOOR FLAT
- ✓ TWO BEDROOMS
- ✓ FITTED KITCHEN WITH APPLIANCES
- ✓ MODERN BATHROOM SUITE
- ✓ COMMUNAL GARDENS
- ✓ ALLOCATED OFF STREET PARKING SPACE
- ✓ NEAREST STATION GREENHITHE
- ✓ SHORT RIDE TO BLUEWATER



Description

Available from end of July 2021. Neutrally decorated first floor flat comprising of two bedrooms, double aspect reception room, fitted kitchen with appliances, modern bathroom suite, allocated off street parking space and communal garden areas, close to M25 links, Asda Super Store and Bluewater shopping centre. Please call Bishop Estates to arrange a viewing on 01689 873 796.

Location

Situated in Stone within a few minutes drive of Junction 1a of the M25.

First Floor

ENTRANCE HALL - Laminate flooring, storage cupboard.

RECEPTION ROOM - Overlooking rear gardens, bay window and further window to rear, laminate flooring.

FITTED KITCHEN - With a range of matching wall and base units with work tops over, washing machine, built in oven and hob, extractor over, fridge freezer, tiled flooring, part tiled walls, round bowl sink unit with mixer tap, extractor, window to side.

BATHROOM - Panelled bath with mixer tap and over head electric shower unit, concealed low level wc, drawer unit, wash hand basin inset vanity unit, vanity mirror, fully tiled, extractor fan.

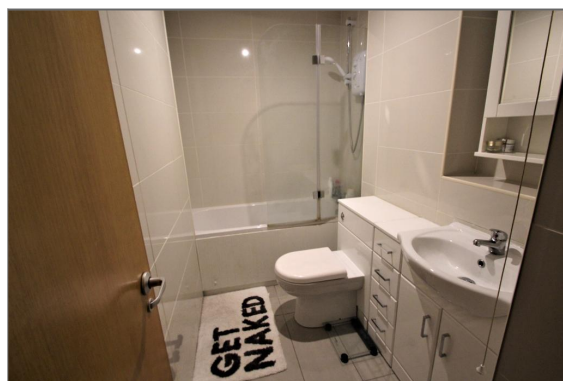
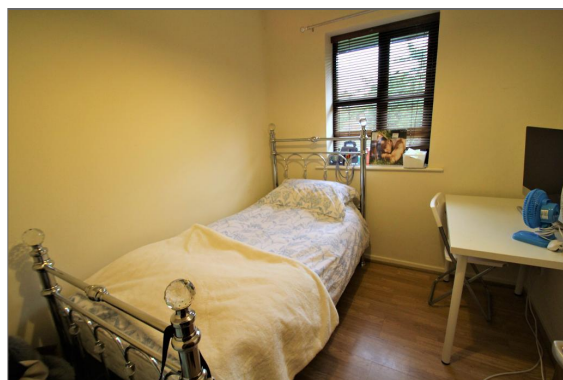
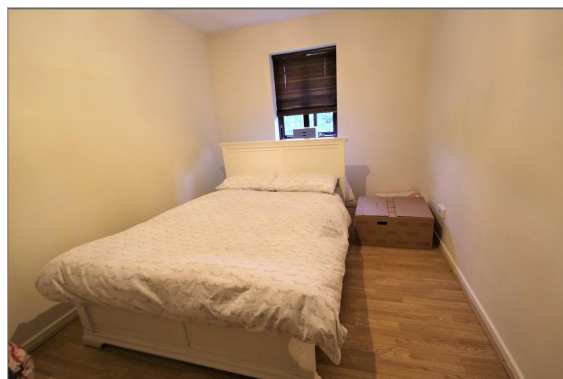
BEDROOM ONE - Window to rear, laminate flooring.

BEDROOM TWO - Window to rear, laminate flooring.

Exterior

OFF STREET PARKING TO FRONT - Allocated off street parking space. Space 203

COMMUNAL GARDENS - Communal gardens.



Energy Efficiency and Environmental Impact

Energy Efficiency Rating			
Score	Energy rating	Current	Potential
92+	A		
81-91	B		
69-80	C		
55-68	D	64 D	70 C
39-54	E		
21-38	F		
1-20	G		

Disclaimer: These particulars are thought to be materially correct though their accuracy is not guaranteed and they do not form part of any contract. All measurements are approximate and we have not tested any fitted appliances, electrical or plumbing installation or central heating systems.