

To Let

Queensway, Petts Wood, Orpington BR5 1EB



£1,200 PER MONTH

1 BEDROOM FLAT

- ✓ Brand new development
- ✓ First floor apartment
- ✓ Spacious double bedroom
- ✓ Open plan kitchen/living
- ✓ Luxury bathroom
- ✓ Integrated appliances
- ✓ Short walk to Petts Wood Station
- ✓ Unfurnished



Description

Bishop Estates welcomes to the rental market, this brand new development. The property offers a one double bedroom apartment with open plan living and comes supplied with integrated fridge/ freezer, dishwasher and washing machine. The luxury fitted bathroom also includes the benefit of a shower over the bath for the busy mornings. This property is unique and this particular flat is one of the most spacious available in the area and not to be missed. Less than 3 minute walk to Petts Wood Station. Minimum 12 month rental with professionals welcomed.



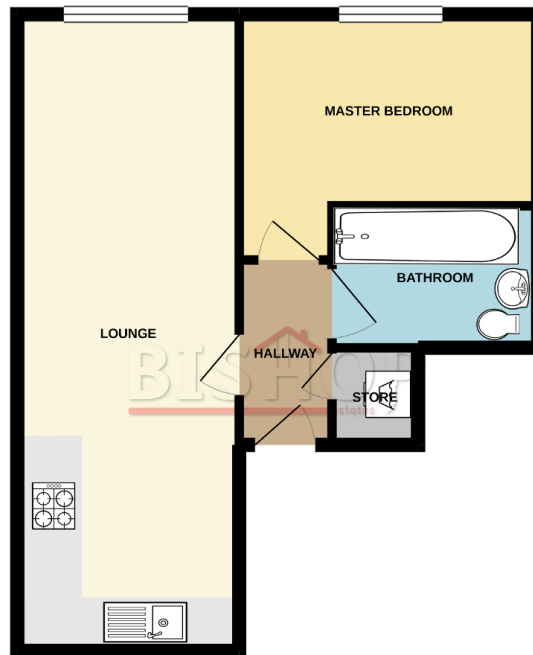
Location

The apartment is directly opposite Morisons store and a 100 yards from Petts Wood train station (serving mainline London stations, DLR via Lewisham and Thameslink connections via Bromley South), good transport links in Station Square for Bromley and Orpington amenities, plus a great selection of shops, restaurants and cafes on your doorstep. Although the property does not come with parking there are local roads where parking is achievable and very flexible in the evening time.



Floorplans

FIRST FLOOR



Whilst every attempt has been made to ensure the accuracy of the floorplan contained here, measurements of doors, windows, rooms and any other items are approximate and no responsibility is taken for any error, omission or mis-statement. This plan is for illustrative purposes only and should be used as such for any prospective purchaser. The services, systems and appliances shown have not been tested and no guarantee as to their operability or efficiency can be given.
Made with Metapix 02021

Additional Information

Holding fee £276 (1 week's rent)

Deposit £1,384 (5 week's rent)

One month's rent in advance

Full professional referencing required

Disclaimer: These particulars are thought to be materially correct though their accuracy is not guaranteed and they do not form part of any contract. All measurements are approximate and we have not tested any fitted appliances, electrical or plumbing installation or central heating systems.