

1 Bedroom House Share for Rent - **From £850 per month**

Elm Road, Sidcup, Kent, DA14 6AD



KEY FEATURES

- 1ST FLOOR DOUBLE FURNISHED ROOM • EN SUITE SHOWER ROOM • SUIT WORKING PROFESSIONAL ONLY • HIGH SPEED WIFI INCLUDED • LARGE COMMUNAL KITCHEN & GARDEN ACCESS • WASHING MACHINE & TUMBLE DRIER • COMMUNAL LOUNGE • INCLUDES ALL BILLS EXC TV LICENCE • CLOSE TO SHOPS AND BUS ROUTES • PARKING AVAILABLE FOR ADDITIONAL COST

Description

Available NOW with minimum six month tenancy
This large double room is inclusive of furniture (you will need to provide your own double mattress) has a fully tiled en-suite, overlooking the rear garden. All tenants will have access to a communal lounge, a large kitchen with multiple appliances and a large dining table and use of a large garden to the rear. High speed WiFi included.
Suitable for a professionals only.
Please note that parking can be negotiated separately with this property at £60 per month.

Conveniently located for local shops and transport are these newly decorated furnished rooms within a 8 bedroom semi detached house. All rooms are inclusive of most bills (excluding TV licence) and are ideally suited for professional workers, and will appeal particularly to the staff of Queen Mary's hospital due to the close proximity of this property.

Please call Bishop Estates to arrange a viewing on 01689 873796.

Location

The property is within walking distance of Queen Mary's Hospital, Sidcup and is conveniently situated 0.9 mile from Sidcup station with mainline links to London. The sought-after village of Chislehurst with its excellent range of restaurants and boutique shops is 2.1 miles. Central London is 13.2 miles by car and London City Airport is 9.2 miles.

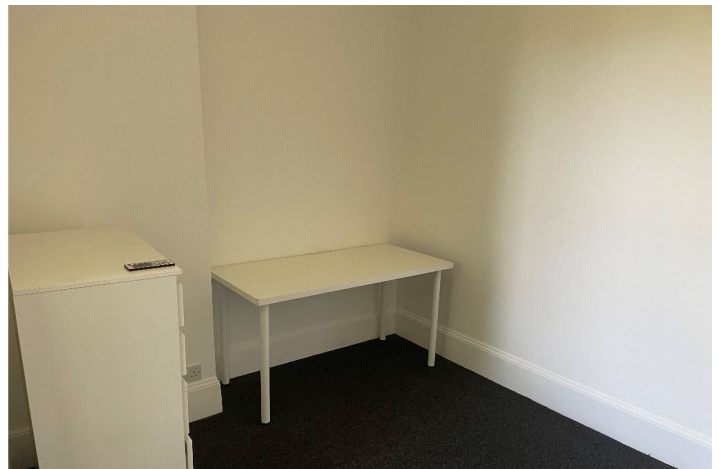
Ground Floor

ENTRANCE HALL - Door to communal entrance hall. Stairs to first floor

First Floor

DOUBLE BEDROOM - 15' 1" x 12' 5" (4.61m x 3.8m) At the top of the stairs, Room 6 is directly on the left. Double bedroom with en suite
Room includes
1 x double bed (you will need to provide mattress)
1 x wardrobe
1 x chest of 5 drawers
1 x desk
1 x bedside cabinet

EN SUITE - 7' 1" x 3' 4" (2.16m x 1.05m) En suite shower room, with hand basin and low level WC. Fully tiled. Towel Rail

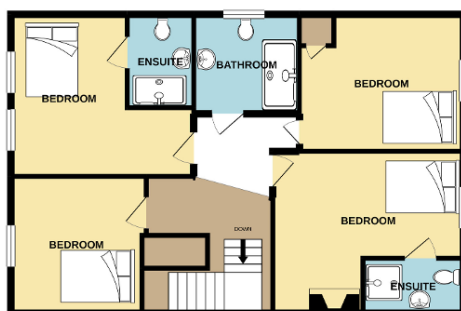




GROUND FLOOR

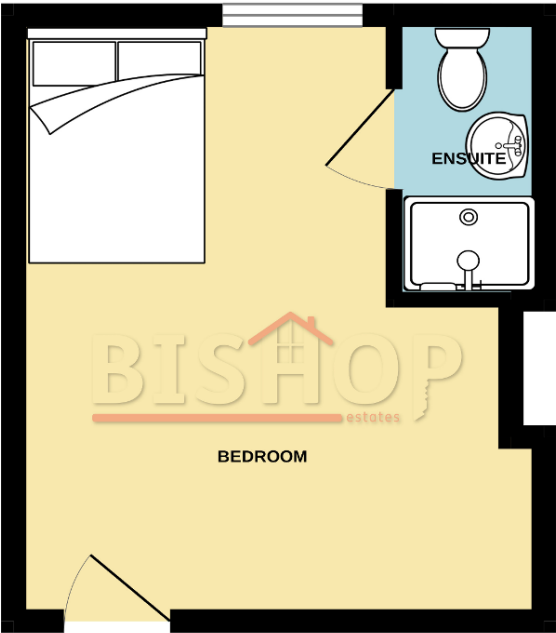


1ST FLOOR



Whilst every attempt has been made to ensure the accuracy of the floorplan contained here, measurements of doors, windows, rooms and any other items are approximate and no responsibility is taken for any error, omission or mis-statement. This plan is for illustrative purposes only and should be used as such by any prospective purchaser. The services, systems and appliances shown have not been tested and no guarantee as to their operability or efficiency can be given.
Made with Metropix ©2021

FIRST FLOOR
185 sq.ft. (17.2 sq.m.) approx.



FIRST FLOOR, REAR BEDROOM WITH ENSUITE

TOTAL FLOOR AREA : 185 sq.ft. (17.2 sq.m.) approx.

Whilst every attempt has been made to ensure the accuracy of the floorplan contained here, measurements of doors, windows, rooms and any other items are approximate and no responsibility is taken for any error, omission or mis-statement. This plan is for illustrative purposes only and should be used as such by any prospective purchaser. The services, systems and appliances shown have not been tested and no guarantee as to their operability or efficiency can be given.
Made with Metroptix ©2022

