

2 Bedroom Detached House for Rent - **£1,875 per month**

High Street, Penge, SE20 7HB



KEY FEATURES

- RARELY AVAILABLE 2 BED DETACHED HOUSE • 2 DOUBLE BEDROOMS • LUXURY FITTED KITCHEN • BONUS UTILITY ROOM WITH WC • MODERN FAMILY BATHROOM • BEAUTIFULLY PRESENTED • SUIT WORKING PROFESSIONALS • LONG TERM RENTAL AVAILABLE • 2 MINUTE WALK TO PENGE WEST STATION • COUNCIL TAX BAND D

Description

Bishop Estates are delighted to offer this rarely available, two double bedroom detached house to the rental market. The property benefits from entrance open porch, large living/dining room area with double aspect windows allowing for natural light to flood in. A fully fitted kitchen with both wall and floor units along with an additional utility room with downstairs WC.

Upstairs there is two large double bedrooms and a separate bathroom (newly tiled) with bath and shower over, low level WC and basin. The property also benefits from gas fired Combi central heating.

Outside there is parking to the front of the property for three cars and the added benefit of a private garden to the side with raised decked area.

Location

The property is positioned perfectly for the convenience of the popular Crystal Palace Park and Penge High street with its array of shops, restaurants, and bars as well as local transport links that include both Penge West and Penge East overground stations.

Summary & Exclusions:

- Rent Amount: £1995 per month (£460.40 per week)
- Deposit / Bond: £2,301
- 2 Bedrooms
- 1 Bathrooms
- 1 downstairs WC
- Property comes unfurnished
- Available to move in from 10th November 2023
- Minimum tenancy term is 12 months
- Maximum number of tenants is 2
- No Pets, sorry
- Family Friendly
- Bills not included
- Parking Available for 3 cars
- Garden Access
- EPC Rating: C
- Council Tax Band D

Ground Floor

LOUNGE - 19' 1" x 14' 0" (5.83m x 4.27m) Double aspect windows, luxury vinyl flooring, radiator, access to kitchen, access to downstairs WC/utility

LUXURY KITCHEN - 9' 6" x 8' 0" (2.91m x 2.44m) Selection of wall and base units, luxury vinyl flooring, window to front

BONUS UTILITY ROOM - 9' 1" x 5' 5" (2.78m x 1.66m) Downstairs low level toilet, utility cabinets, plumbing space for washing machine, access to rear garden



First Floor

MASTER BEDROOM - 19' 2" x 10' 6" (5.85m x 3.22m)

Fantastic double bedroom with plenty of space for wardrobes and bedroom furniture. Window to front with radiator under. Carpeted.

BEDROOM TWO - 11' 6" x 8' 11" (3.51m x 2.72m) Double bedroom with window to front and radiator under, carpets as laid

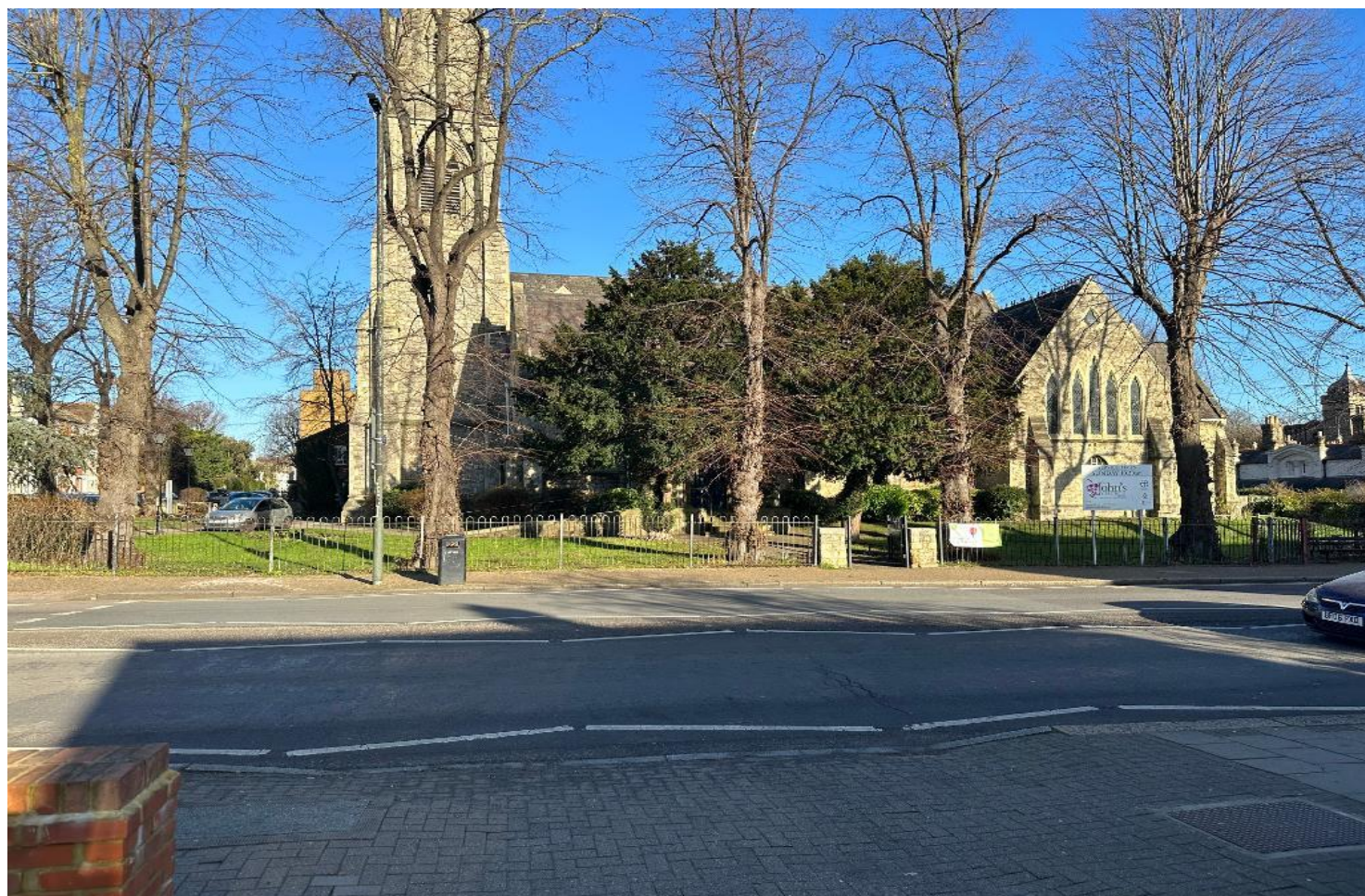
FAMILY BATHROOM - 8' 6" x 5' 10" (2.6m x 1.8m) Family bathroom with extractor fan, shower over bath, low level WC and single basin, luxury flooring, double radiator

Exterior

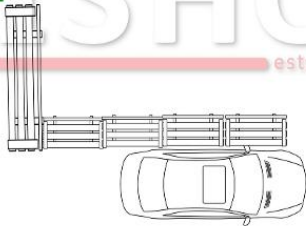
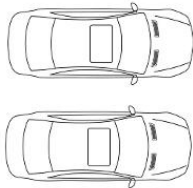
REAR GARDEN - 46' 3" x 14' 9" (14.1m x 4.52m) Wonderful garden for those hot summer nights, great for outdoor BBQ outside electric points for convenience

FRONT DRIVE - Parking for three cars available. Block paved

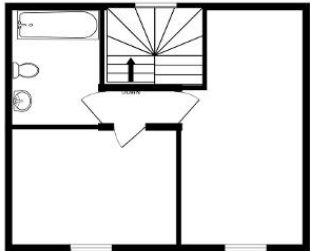




GROUND FLOOR
454 sq.ft. (42.2 sq.m.) approx.



1ST FLOOR
435 sq.ft. (40.4 sq.m.) approx.



HIGH STREET PEGGE

TOTAL FLOOR AREA : 889 sq.ft. (82.6 sq.m.) approx.

Whilst every attempt has been made to ensure the accuracy of the floorplan contained here, measurements of doors, windows, rooms and any other items are approximate and no responsibility is taken for any error, omission or mis-statement. This plan is for illustrative purposes only and should be used as such by any prospective purchaser. The services, systems and appliances shown have not been tested and no guarantee as to their operability or efficiency can be given.
Made with Metropix ©2023

Energy Efficiency Rating

Score	Energy rating	Current	Potential
92+	A		
81-91	B		87 B
69-80	C	70 C	
55-68	D		
39-54	E		
21-38	F		
1-20	G		