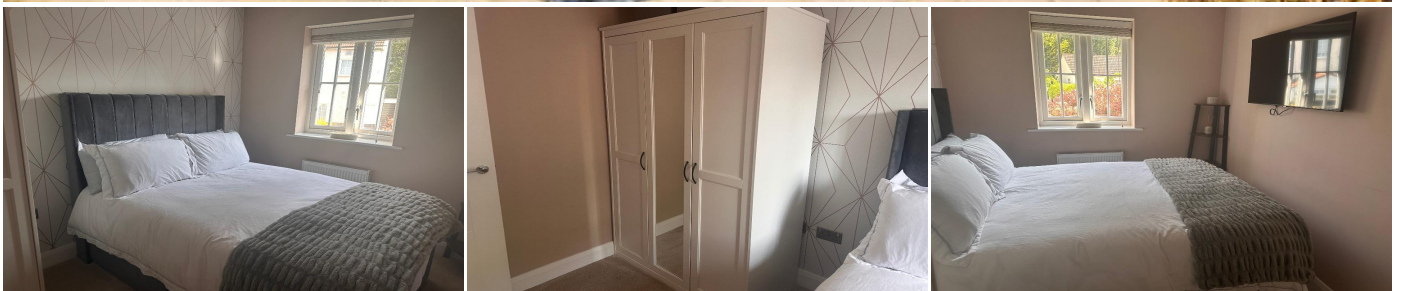


1 Bedroom House Share for Rent - **£1,000 per month**

Warnham Grove, Orpington, Kent, BR5 3FT



KEY FEATURES

- DOUBLE SIZE ROOM IN IMMACULATE HOUSE
- ALL BILLS INCLUDED
- FULLY FURNISHED MASTER BEDROOM
- OWN BATHROOM
- SHARED KITCHEN AND LIVING AREA
- PRIVATE GARDEN
- CLOSE TO BUS ROUTES
- APPROX 15 MINS WALK ST MARY CRAY STATION
- ALLOCATED PARKING SPACE
- EPC RATING C

Description

AVAILABLE NOW

Bishop Estates are delighted to offer a furnished double bedroom within a very well maintained property with access to a private use bathroom. All bills are included including WiFi, Council Tax and services. The property has the benefit an allocated parking space available and would be suitable for a single professional.

Location

Warnham Grove is well located for local schools, shops, bus routes and St. Mary Cray mainline station. Located in a private gated close. Parade of local shops within 2 mins walk.

Ground Floor

SHOWER ROOM - Enclosed shower cubicle, with low level w.c. and wash hand basin. Fully tiled walls.

SHARED KITCHEN - Range of white gloss wall and floor units with worktops over. Samsung gas hob, oven under. Washing machine, Water softener system. Composite flooring.

SHARED LIVING/DINING ROOM - Immaculately decorated and kept room with all furniture and dining room table. Large wall mounted TV. Double glazed doors to garden.

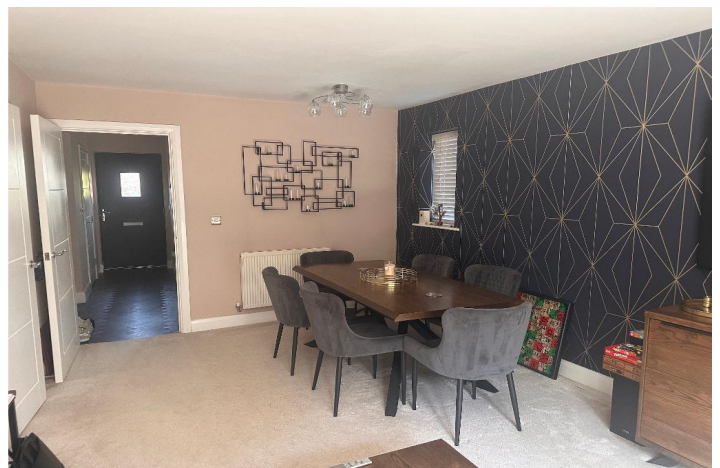
First Floor

BEDROOM - 7' 6" x 11' 4" (2.31m x 3.48m) Very well decorated room. Double glazed window overlooking rear garden, with radiator under. Double bed with storage under. Large 3 door wardrobe. Large wall mounted T.V includes Freeview. Fitted carpet.

BATHROOM - White bathroom suite comprising bath with mixer taps and shower attachment. Pedestal wash hand basin. Low level w.c. Fully tiled walls and floor. Heated towel rail

Exterior

REAR GARDEN - Very well kept and maintained rear garden. Large patio area, mainly laid to lawn with well established bushes and trees.



Score	Energy rating	Current	Potential
92+	A		
81-91	B		90 B
69-80	C	78 C	
55-68	D		
39-54	E		
21-38	F		
1-20	G		

